

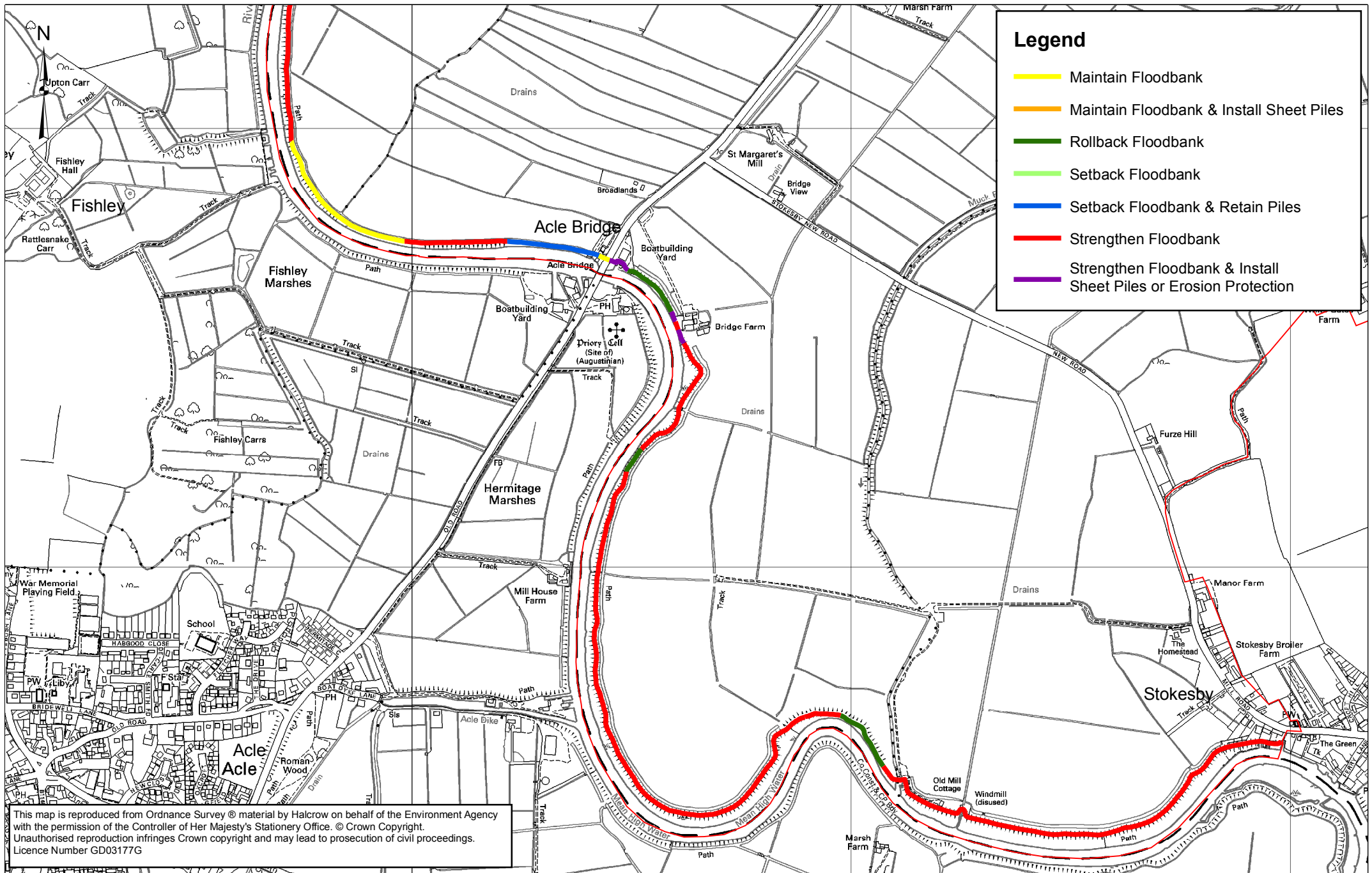
Legend

- Maintain Floodbank
- Maintain Floodbank & Install Sheet Piles
- Rollback Floodbank
- Setback Floodbank
- Setback Floodbank & Retain Piles
- Strengthen Floodbank
- Strengthen Floodbank & Install Sheet Piles or Erosion Protection

This map is produced from the OS Map by the Environment Agency with the permission of Ordnance Survey on behalf of the controller of Her Majesty's Stationary Office. © Crown Copyright. All rights reserved. Unauthorised reproduction infringes Crown copyright and may lead to prosecution or Civil Proceedings. Licence Number GD03177G



Flood Defence Proposals for Boundary Dyke to Stokesby (Compartment 09)



Legend

- Maintain Floodbank
- Maintain Floodbank & Install Sheet Piles
- Rollback Floodbank
- Setback Floodbank
- Setback Floodbank & Retain Piles
- Strengthen Floodbank
- Strengthen Floodbank & Install Sheet Piles or Erosion Protection

This map is reproduced from Ordnance Survey® material by Halcrow on behalf of the Environment Agency with the permission of the Controller of Her Majesty's Stationery Office. © Crown Copyright. Unauthorised reproduction infringes Crown copyright and may lead to prosecution of civil proceedings. Licence Number GD03177G



Flood Defence Proposals for Boundary Dyke to Stokesby (Compartment 09)