

# Broadland Flood Alleviation Project

## Protecting



## Broadland

## Tree and scrub clearance in the Waveney valley

September 2004

### Introduction

In May 2001 Broadland Environmental Services Limited (BESL) was awarded a long-term contract by the Environment Agency to improve and maintain flood defences in Broadland. The Agency's approach to flood alleviation in Broadland was adopted in the 1990's and is based on a strategy consisting mainly of bank strengthening and erosion protection and reducing the risk of banks breaching. BESL has recently updated this strategy and it now sets the scene for how this and future improvement schemes are designed, programmed and carried out.

Recent detailed surveys and monitoring confirm that improvements are needed to the flood defences along the River Waveney. BESL are currently designing improvement schemes for the floodbanks on the south side of the river from Beccles downstream to Oulton Broad (Whitecast Marshes) (the red line on the Figure below indicates the extent of the works).

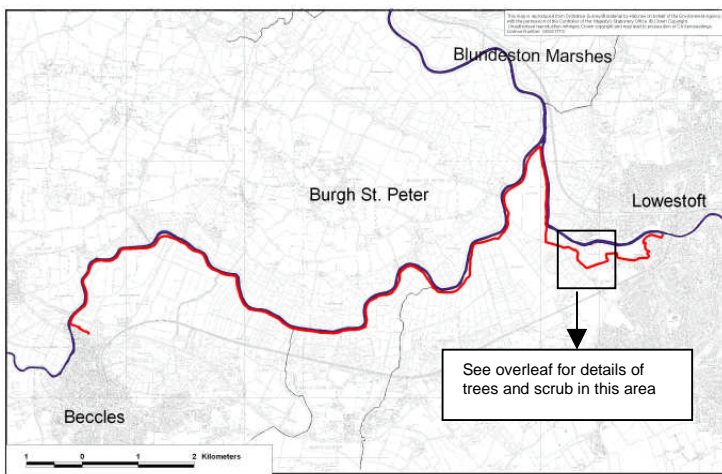
### Tree and scrub clearance

This summer BESL has carried out a vegetation survey in the whole Waveney valley in order to identify both the extent of clearance required and where trees and scrub could be retained. To allow BESL to start the necessary improvement works along the south side of the river in spring 2005, some of the trees and scrub within the works area will have to be cleared in autumn/winter 2004 prior to planning application submission. This leaflet has been prepared as part of BESL's public consultation process to inform you of the tree clearance in this area.

As part of BESL's ongoing dialogue with stakeholders within Broadland, a seminar was held on 27 May 2004 with the aim of developing a sustainable tree and scrub management strategy. This seminar was attended by a range of local and Broads-wide organisations and all issues raised have been incorporated into a Tree and Scrub Management Guidance for Broadland River Corridors, which has been produced by the Broads Authority.

With a view to minimising the amount of trees felled along the Waveney wherever possible, BESL's survey has identified a large number of trees that can be retained or pollarded (see example map overleaf). Trees have also been assessed as potential bat habitats and more detailed bat surveys will be undertaken prior to any tree clearance. The felling of trees during autumn/winter will ensure that birds are not disturbed during the nesting season.

For Health and Safety reasons it will be necessary to close the footpath along some parts of the floodbank during tree clearance.

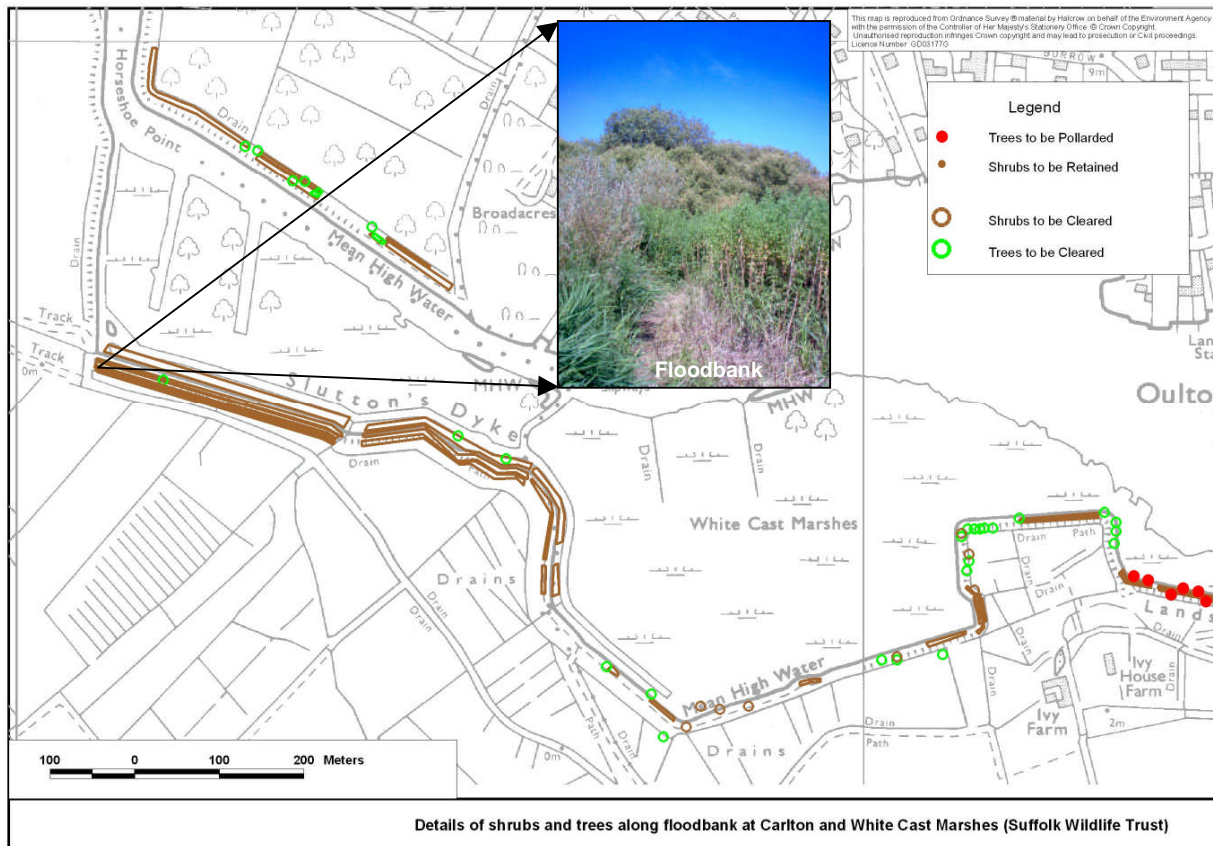


## Improvement scheme consultation

A consultation document describing the proposed improvement works will be circulated to interested parties in October 2004. Comments received will help in the development of the proposals before submission of the planning application. If you would like to be included on the list of consultees or have any comments to make please contact Tanja Hofmann at:

Broadland Environmental Services Ltd.  
Grosvenor House  
112-114 Prince of Wales Road  
Norwich  
NR1 1NS.  
Tel. 01603 226161

[Halcrow@edmund-nuttall.co.uk](mailto:Halcrow@edmund-nuttall.co.uk)



## Contact details:

Broadland Environmental Services Limited  
Grosvenor House  
112-114 Prince of Wales Road  
Norwich  
NR1 1NS



Tel. 01603 226161 Fax 01603 631505

**The Broadland Flood Alleviation Project is being delivered under the Public Private Partnership Programme by Broadland Environmental Services Limited on behalf of the Environment Agency.**

Broadland Environmental Services Limited is a joint venture company between Edmund Nuttall Ltd. and Halcrow Group Ltd. BESL Registered office St. James House, Knoll Road, Camberley, Surrey, GU15 3XW. Registered in England No. 03683242