

Broadland Flood Alleviation Project

Protecting



Broadland

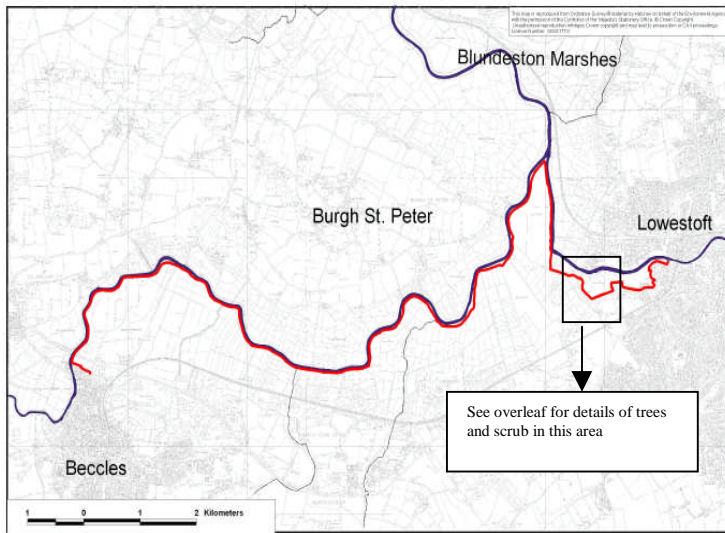
Tree and scrub clearance in the Waveney valley

October 2005

Introduction

In May 2001 Broadland Environmental Services Limited (BESL) was awarded a long-term contract by the Environment Agency to improve and maintain flood defences in Broadland. The Agency's approach to flood alleviation in Broadland was adopted in the 1990's and is based on a strategy consisting mainly of bank strengthening and erosion protection in order to reduce the risk of banks breaching.

BESL are currently undertaking improvement works on the floodbanks on the southern side of the River Waveney, near Beccles Marshes; they are also in the process designing the improvement schemes for the floodbanks on the north and south side of the river from Aldeby downstream to Whitecast Marshes/Burgh St Peter (the red line on the Figure below indicates the extent of these works).



Tree and scrub clearance

If trees and scrub are present along the floodbanks, road and/or folding, they can have implications for the construction, viability and maintenance of the flood defences.

As part of BESL's ongoing dialogue with stakeholders within Broadland, a seminar was held in May 2004 with the aim of developing agreed criteria for managing trees and scrub for flood defence purposes. The seminar was attended by a range of local and Broads-wide organisations, with all issues raised subsequently incorporated into the Broads Authority's recently published Tree and Scrub Management Guidance for Broadland River Corridors.

In order to identify both the extent of clearance required and where trees and scrub could be retained BESL has carried out vegetation surveys in those compartments where large numbers of trees and/or scrub are present along the floodbank corridor. Surveys in the Waveney valley have identified the presence of a significant number of trees growing along the folding, bank and rond. In order to reduce the impact of clearance BESL will seek to retain some scrub and trees wherever possible (see example map overleaf). The felling of trees during autumn/winter will ensure that birds are not disturbed during the nesting season. Further information regarding BESL's approach to environmental issues, including protected species, can be found on the Project's website: www.bfap.org

After a previous consultation exercise some tree clearance was undertaken in the Waveney valley last winter. To allow BESL to undertake flood defence improvement works in the area, some of the remaining trees and scrub will have to be cleared in autumn/winter 2005. The areas affected are Long Dam Level and Short Dam Level on the north bank, and Worlingham through to Whitecast Marshes (Oulton) on the south side. This leaflet has been prepared to inform you of the tree clearance in this area and to invite any comments.

For Health and Safety reasons it will be necessary to temporarily close the footpaths along some parts of the floodbank during tree clearance. Advance notice will be provided on site information boards.

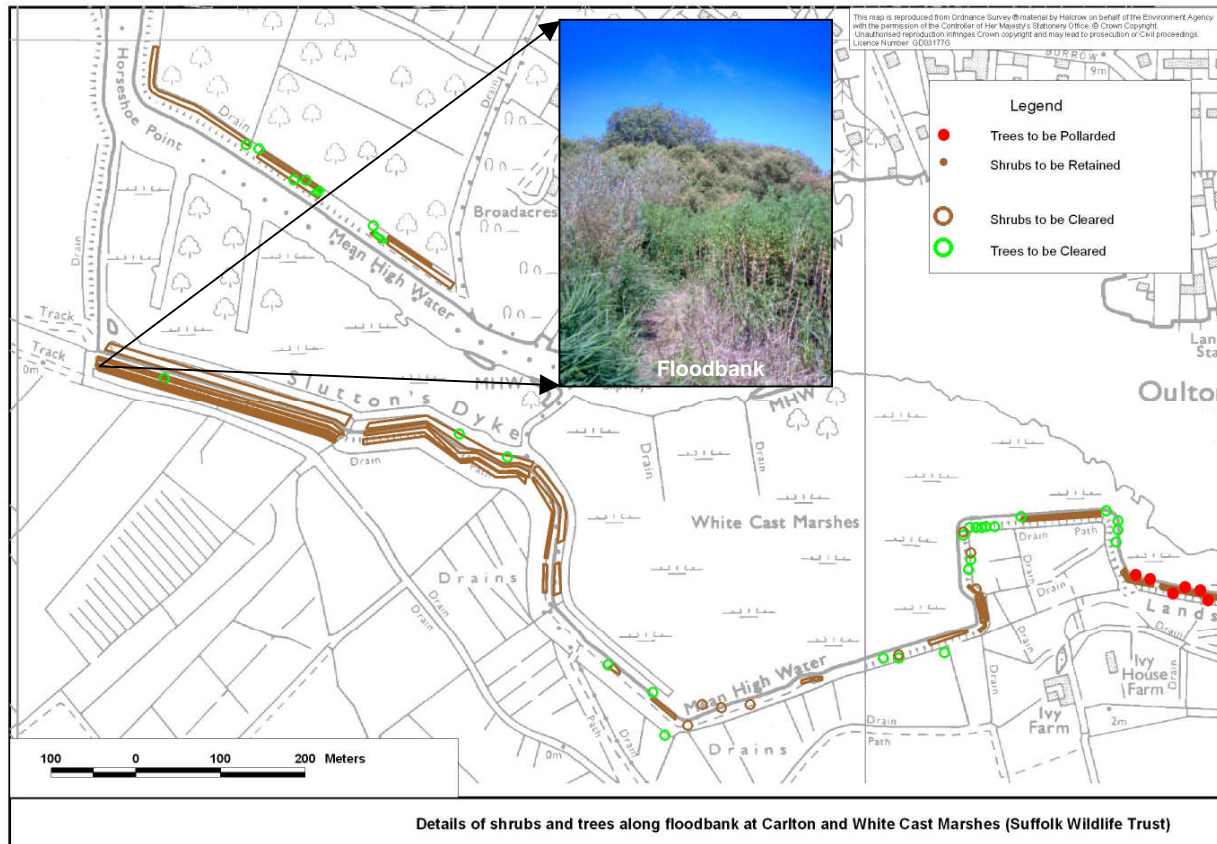
Broadland Environmental Services Limited



Working in partnership



ENVIRONMENT AGENCY



Improvement scheme consultation

Consultation documents describing individual flood defence improvement schemes are sent out separately, and will be available on the Projects website (www.bfap.org). Comments received will help in the development of the proposals before submission for planning approval. If you would like to be included on the list of consultees or have any comments to make please contact Jeremy Halls at:

Broadland Environmental Services Ltd.
 Grosvenor House
 112-114 Prince of Wales Road
 Norwich
 NR1 1NS.
 Tel. 01603 226161
 Fax 01603 631505

Halcrow@edmund-nuttall.co.uk

Further information regarding the various compartments present within the BFAP project area is available from the Project's website: www.bfap.org

The Broadland Flood Alleviation Project is being delivered under the Public Private Partnership Programme by Broadland Environmental Services Limited on behalf of the Environment Agency.

Broadland Environmental Services Limited is a joint venture company between Edmund Nuttall Ltd. and Halcrow Group Ltd. BESL Registered office St. James House, Knoll Road, Camberley, Surrey, GU15 3XW. Registered in England No. 03683242

Broadland Environmental
 Services Limited



Working in partnership



**ENVIRONMENT
 AGENCY**